

Port of Antwerp-Bruges

CCUS Hub

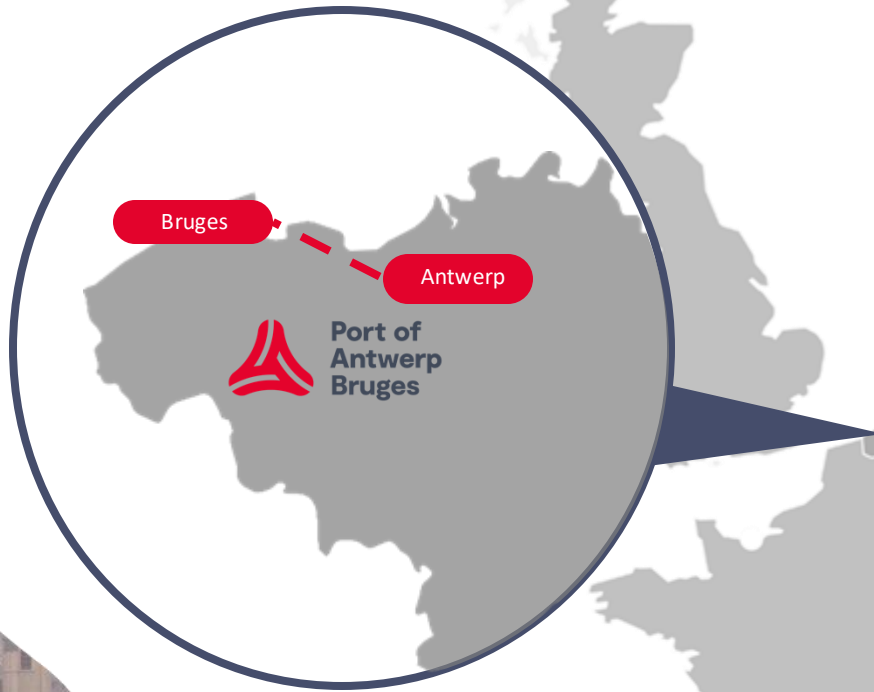
SCCS Conference

3 December



Port of
Antwerp
Bruges





**A global port
in the heart of Europe**

**One port
Two sites**



Industry

Largest European **chemical** cluster in Antwerp

Polymer hub

Expertise

1.000 km
pipelines

Direct pipeline
Rotterdam
Pipelink

Tank capacity

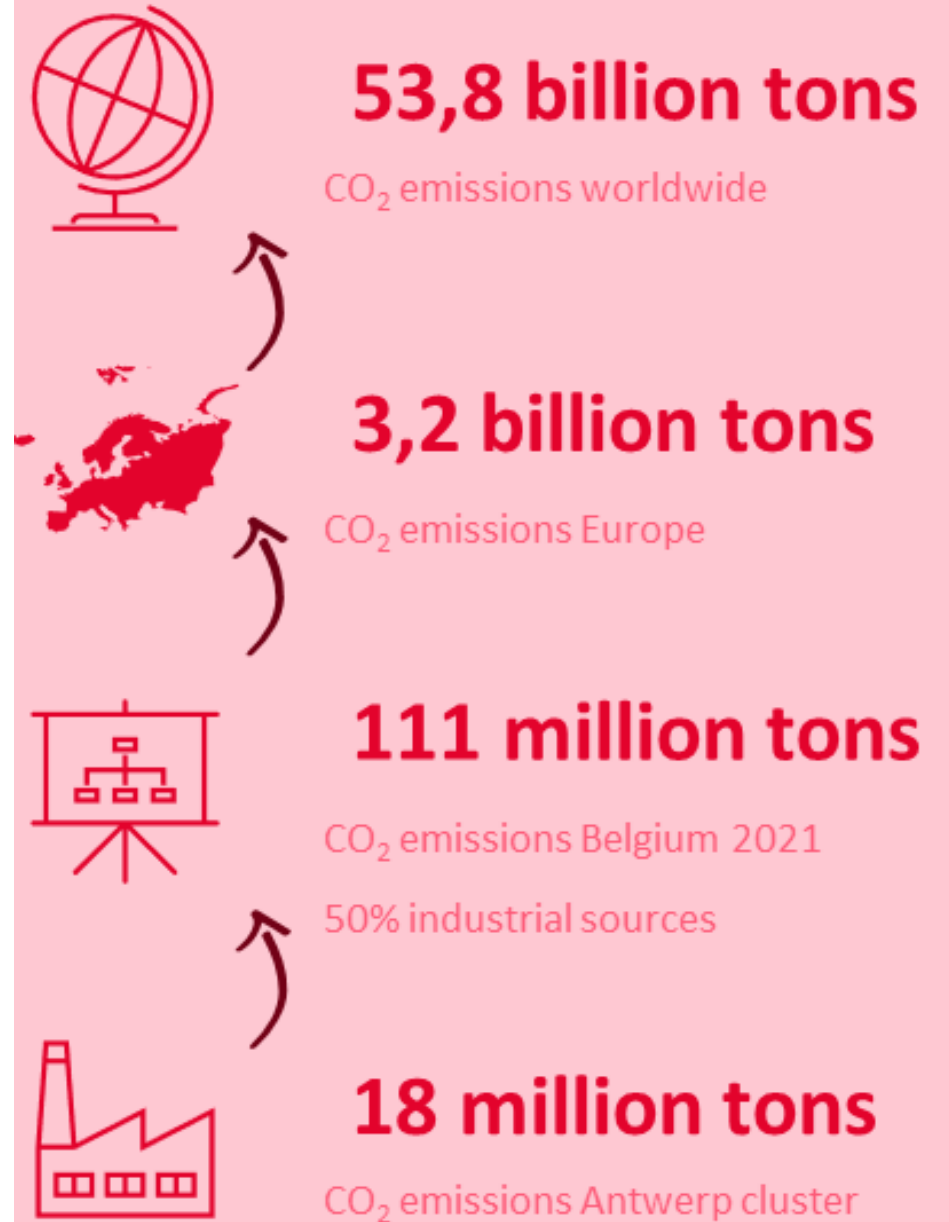
Independent
players



Port of
Antwerp
Bruges

Facts & figures

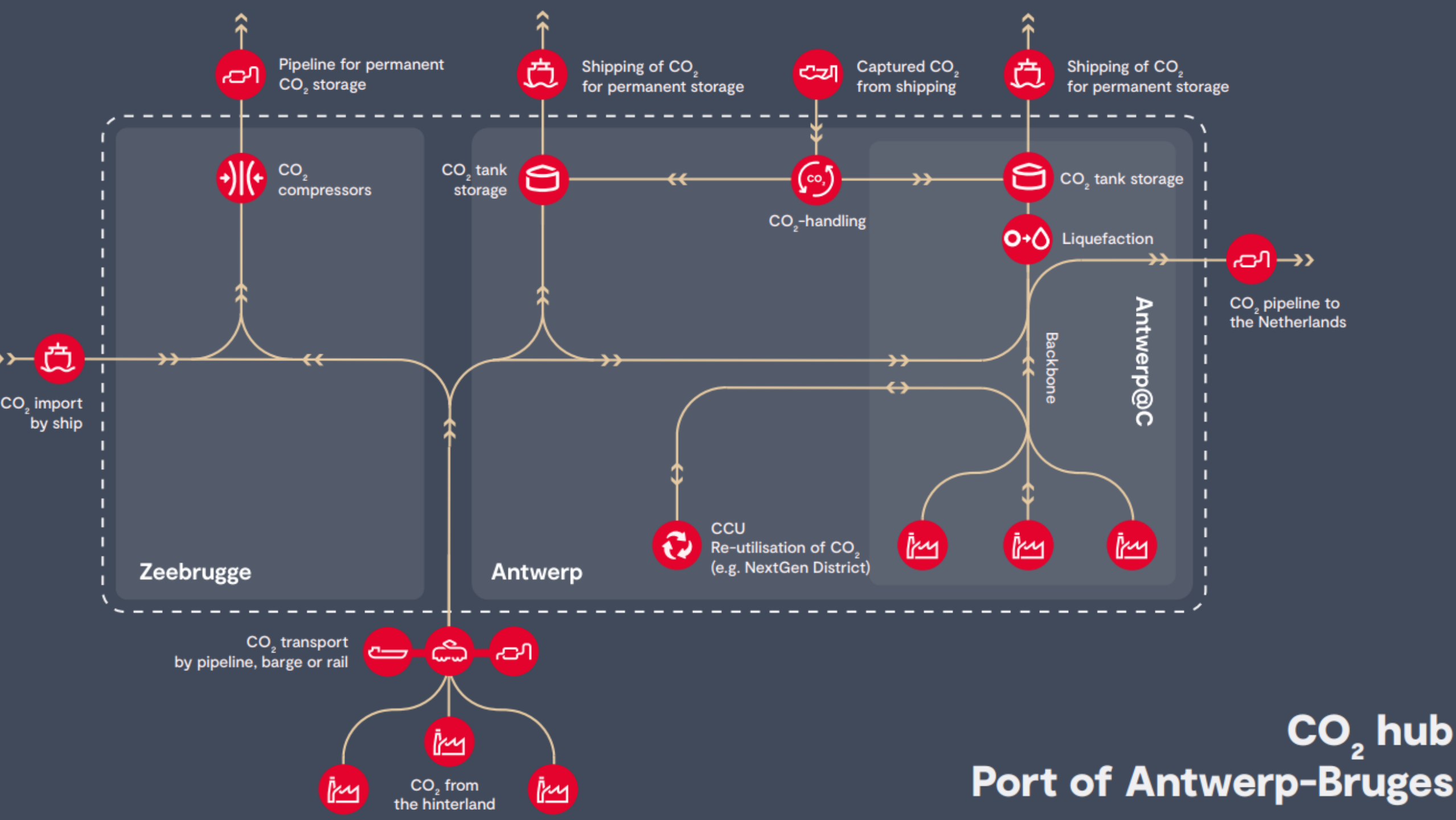
- European Green Deal and ETS framework
 - Climate neutral by 2050?
- Carbon Capture and Storage as one of the solutions



Port of Antwerp- Bruges as CCUS hub in Europe

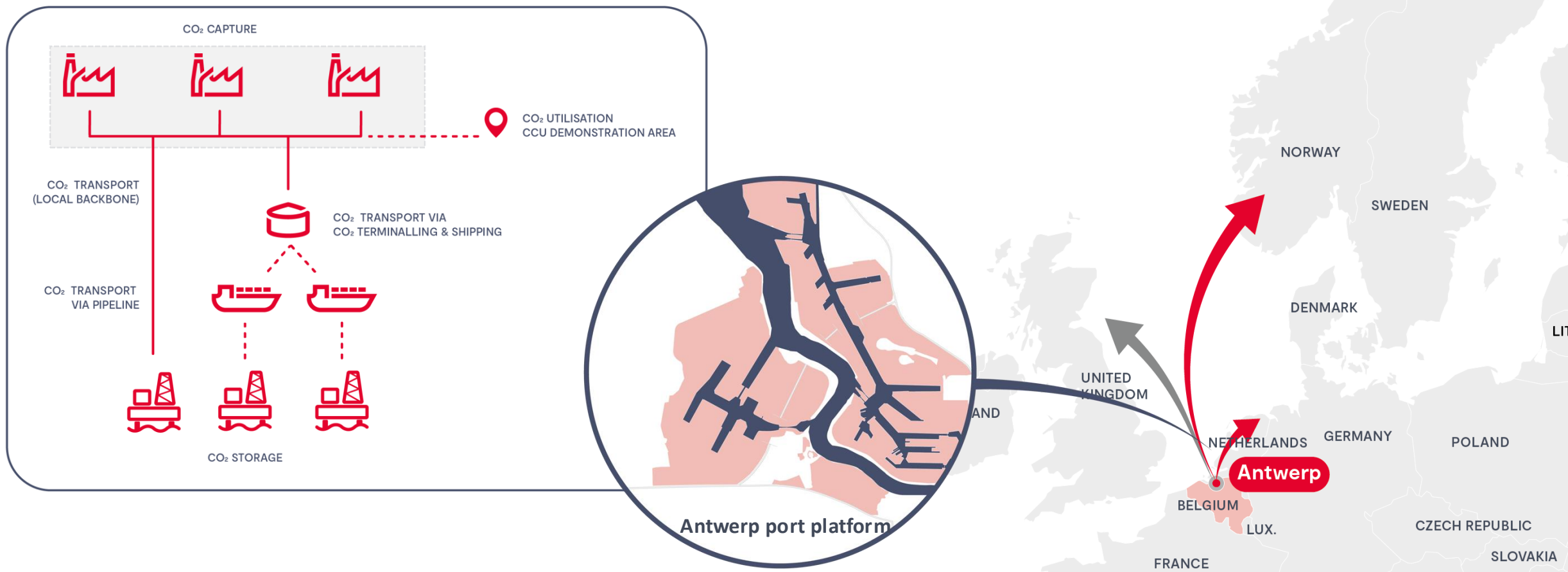


Port of
Antwerp
Bruges

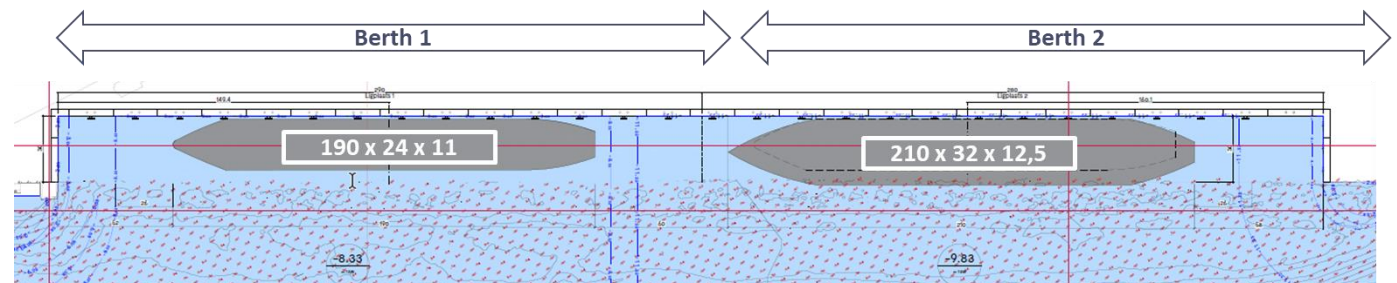
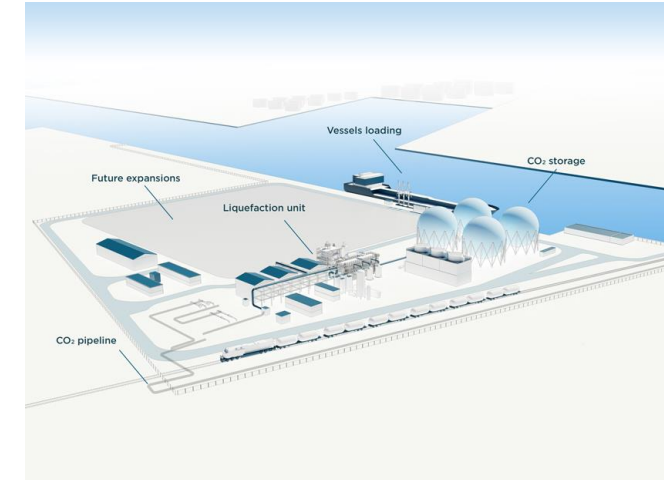


Antwerp@C

Building a CCUS value chain in Port of Antwerp-Bruges



Antwerp@C - CO₂ Pipeline & Export Terminal

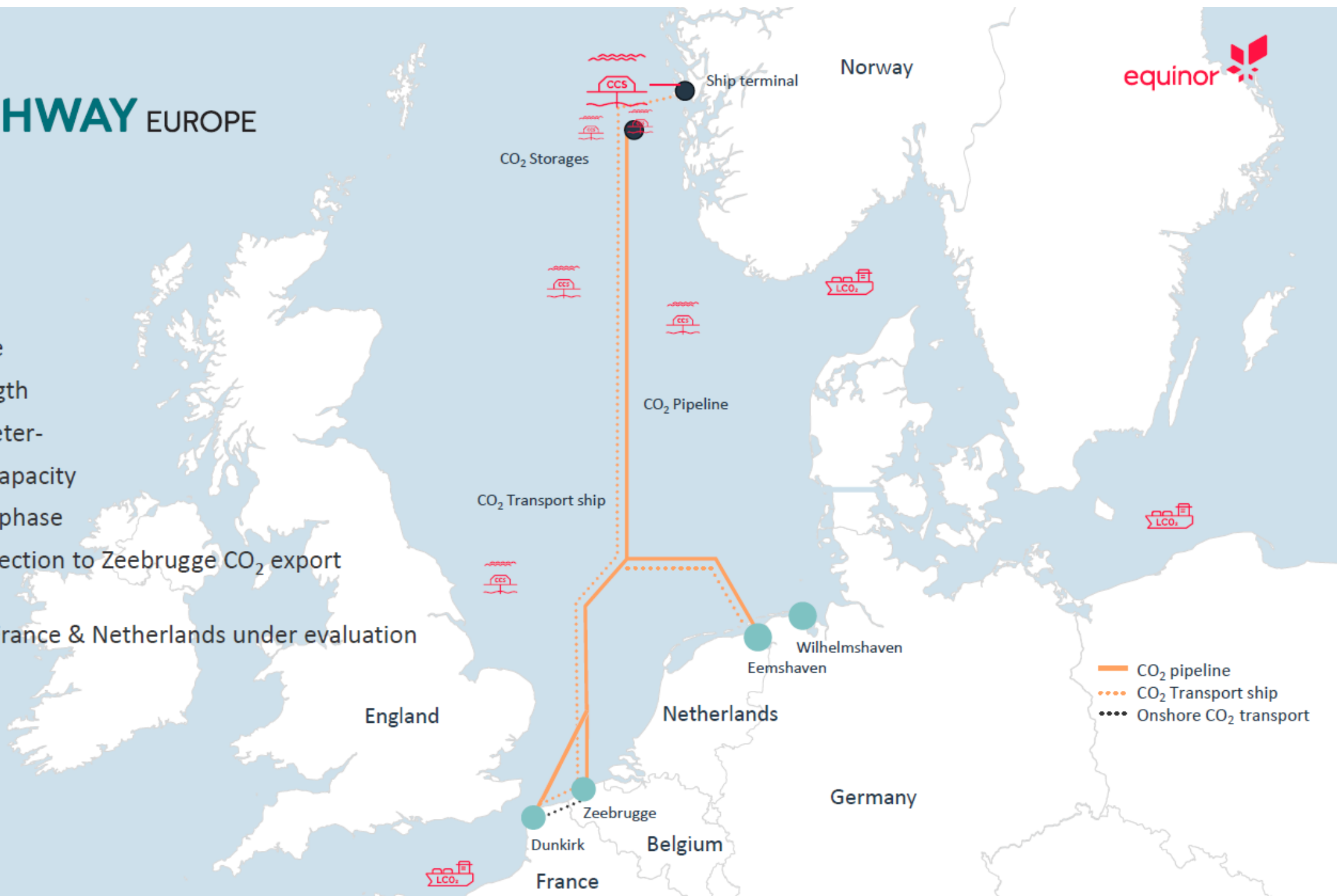


CO₂ HIGHWAY EUROPE



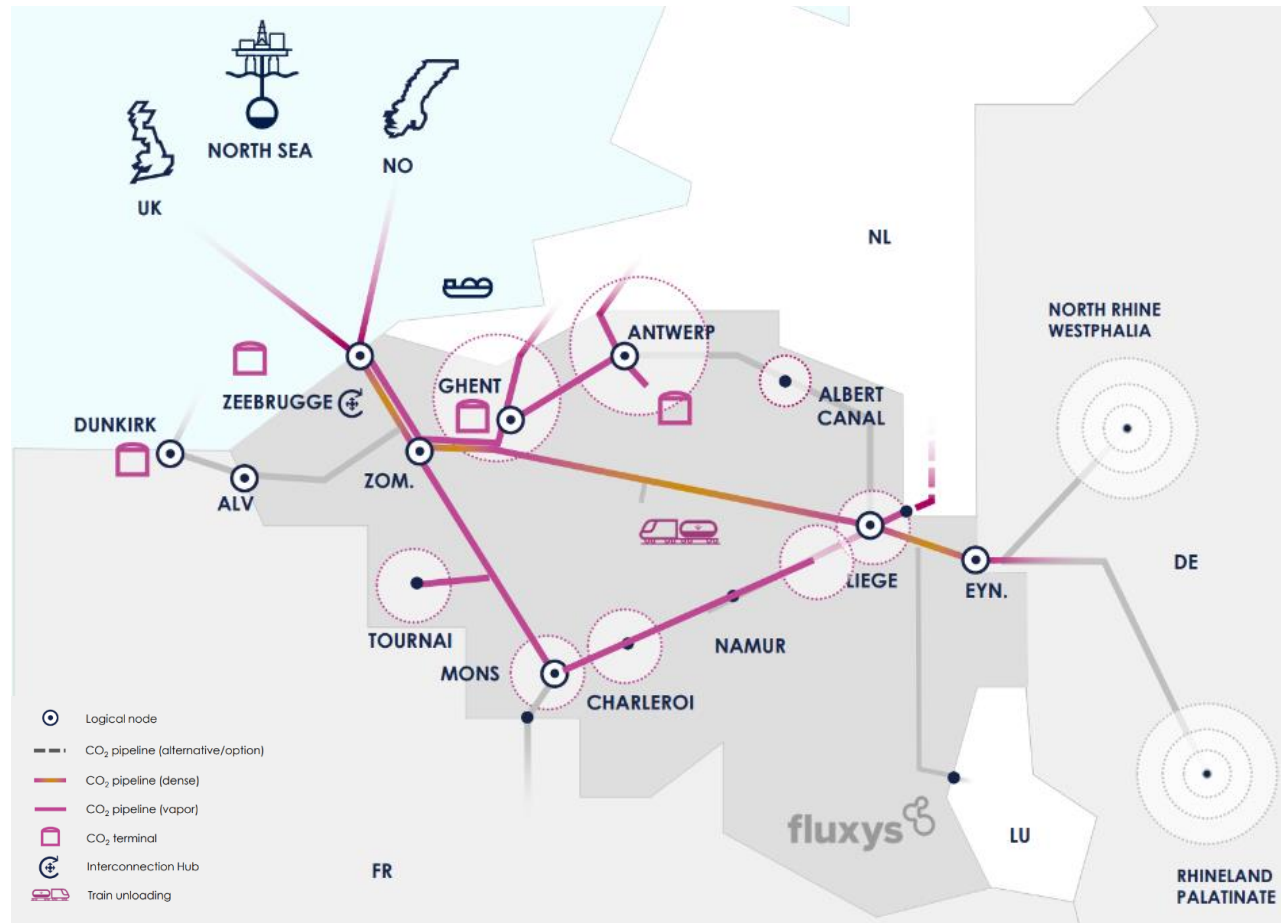
Offshore pipeline

- 1 000 km length
- 36-40" diameter-
- 20-30 Mtpa capacity
- CO₂ in dense phase
- Landfall connection to Zeebrugge CO₂ export terminal
- Branches to France & Netherlands under evaluation



C-Grid

CO₂ pipeline connection



CCUS challenges

New / changing
legislation



CO₂ specifications

Investments



The value chain

In tune with the world

CCS Program Manager: Hanne Talboom (hanne.talboom@portofantwerpbruges.com)